

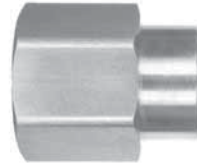
## Pipe

### Female Cross



Sloan No.	Pipe Thread
S102-2	1/8
S102-4	1/4
S102-6	3/8
S102-8	1/2
S102-12	3/4

### Reducer Coupling



Sloan No.	Pipe Thread	
	1	2
S119-4-2	1/4	1/8
S119-6-2	3/8	1/8
S119-6-4	3/8	1/4
S119-8-2	1/2	1/8
S119-8-4	1/2	1/4
S119-8-6	1/2	3/8

### 90° Female Elbow



Sloan No.	Pipe Thread
S200-2	1/8
S200-4•	1/4
S200-6•	3/8
S200-8•	1/2

Ref. SAE 130238

### Female Union



Sloan No.	Pipe Thread
S104-2	1/8
S104-4	1/4
S104-6	3/8
S104-8	1/2

Ref. SAE 130138

### 90° Street Elbow



Sloan No.	Pipe Thread	
	1	2
S202-2	1/8	1/8
S202-4-2	1/4	1/8
S202-4•	1/4	1/4
S202-6•	3/8	3/8
S202-8-6	1/2	3/8
S202-8•	1/2	1/2
S202-12	3/4	3/4

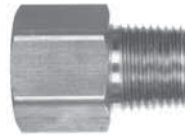
Ref. SAE 130239 (\*Non SAE)

### Long Nipple



Sloan No.	Pipe Thread	Length
S113-02-1.5-R	1/8	1.5
S113-02-2-R	1/8	2.0
S113-02-2.5-R	1/8	2.5
S113-02-3-R	1/8	3.0
S113-04-1.5-R	1/4	1.5
S113-04-2-R	1/4	2.0
S113-04-2.5-R	1/4	2.5
S113-04-3-R	1/4	3.0
*S113-06-1.5-R	3/8	1.5
S113-06-2-R	3/8	2.0
S113-06-2.5-R	3/8	2.5
S113-06-3-R	3/8	3.0
S113-08-2.5-R	1/2	2.5
S113-08-3-R	1/2	3.0
S113-12-2-R	3/4	2.0

### Adapter



Sloan No.	Pipe Thread	
	1	2
S120-2	1/8	1/8
S120-4-2•	1/4	1/8
S120-4	1/4	1/4
S120-6-2	3/8	1/8
S120-6-4•	3/8	1/4
S120-6	3/8	3/8
S120-8-4	1/2	1/4
S120-8-6•	1/2	3/8
S120-8	1/2	1/2
S120-12-8	3/4	1/2

Ref. SAE 130139

### Tee



Sloan No.	Pipe Thread
S203-2•	1/8
S203-4•	1/4
S203-6•	3/8
S203-8	1/2

Ref. SAE 130438

## Pipe

### Female Coupling



Sloan No.	Pipe Thread
S207-2•	1/8
S207-4•	1/4
S207-6•	3/8
S207-8•	1/2
S207-12	3/4

Ref. SAE 130138

### Close Nipple



Sloan No.	Pipe Thread
S215-2•	1/8
S215-4•	1/4
S215-6•	3/8
S215-8•	1/2
S215-12	3/4

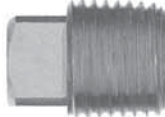
### Street Tee



Sloan No.	Male Pipe Thread	Female Pipe Thread
S225-2	1/8	1/8
S225-4	1/4	1/4
S225-6•	3/8	3/8
S225-8•	1/2	1/2

Ref. SAE 130424

### Square Head Plug



Sloan No.	Pipe Thread
S211-2•	1/8
S211-4•	1/4
S211-6•	3/8
S211-8•	1/2
S211-12*	3/4

Ref. SAE 130109 (\*Non SAE)

### Slotted Plug



Sloan No.	Pipe Thread
S220P-2	1/8
S220P-4	1/4
S220P-6	3/8

### Male Branch Tee



Sloan No.	Male Pipe Thread	Female Pipe Thread
S226-2	1/8	1/8
S226-4	1/4	1/4
S226-6	3/8	3/8
*S226-8	1/2	1/2
S226-12	3/4	3/4

Ref. SAE 130425

### Cap



Sloan No.	Pipe Thread
S213-2	1/8
S213-4	1/4
S213-6	3/8
S213-8	1/2

### 45° Street Elbow



Sloan No.	Pipe Thread
S224-2	1/8
S224-4	1/4
S224-6•	3/8
S224-8*	1/2

Ref. SAE 130339 (\*Non SAE)

### Hex Nipple Straight and Reducing



Sloan No.	Pipe Thread	
	1	2
SPHN-2	1/8	1/8
SPHN-4-2	1/4	1/8
SPHN-4•	1/4	1/4
SPHN-6-2	3/8	1/8
SPHN-6-4	3/8	1/4
SPHN-6•	3/8	3/8
SPHN-8-4	1/2	1/4
SPHN-8-6	1/2	3/8
SPHN-8•	1/2	1/2
SPHN-12*	3/4	3/4
SPHN-12-8	3/4	1/2

Ref. SAE 130137 (\*Non SAE)

## Pipe

### Hex Nipple Straight and Reducing - Steel



Sloan No.	Pipe Thread	
	1	2
HPHN-8-8	1/2	1/2
HPHN-12-8	3/4	1/2
HPHN-12-12	3/4	3/4

### Countersunk Hex-Head Plug



Sloan No.	Pipe Thread	
	Thread	Hex
S219P-2	1/8	3/16
S219P-4	1/4	1/4
S219P-6	3/8	5/16
S219P-8	1/2	3/8
S219P-12	3/4	9/16

### Hex Head Plug



Sloan No.	Pipe Thread
SPPH-2•	1/8
SPPH-4•	1/4
SPPH-6•	3/8
SPPH-8	1/2
SPPH-12•	3/4

Ref. SAE 130109 E

### Reducer Bushing



Sloan No.	Male Pipe Thread	Female Pipe Thread
SPRB-4-2•	1/4	1/8
SPRB-6-2•	3/8	1/8
SPRB-6-4•	3/8	1/4
SPRB-8-2	1/2	1/8
SPRB-8-4•	1/2	1/4
SPRB-8-6•	1/2	3/8
SPRB-12-2	3/4	1/8
SPRB-12-4	3/4	1/4
SPRB-12-6	3/4	3/8
SPRB-12-8•	3/4	1/2
SPRB-16-12	1	3/4

Ref. SAE 130430