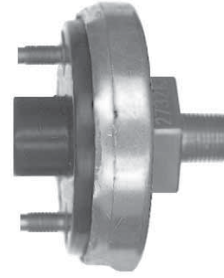


## Switches & Toggles

### Low Pressure Switch

- 12 or 24 Volt
- 1/8" NPT
- Circuit normally open at 0 pressure

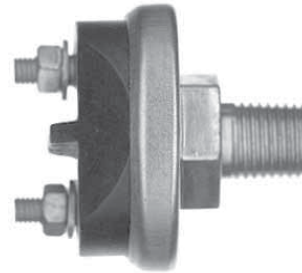
Sloan	
No.	Description
401238	Actuates at 55 psi
401239	Actuates at 66 psi



### Service Circuit Stoplight Switch

- 12 or 24 Volt
- 1/4" NPT
- Actuates at 3-5 psi

Sloan	
No.	Description
401240	Circuit normally opens at 0 pressure



### Trailer Emergency Stoplight Switch

- 12 or 24 Volt
- 1/8" NPT
- Single pole - double throw
- Actuates at 55 psi

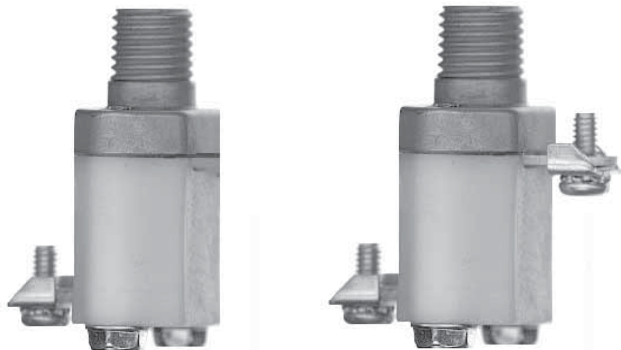
Sloan	
No.	Description
401241	Circuit normally one open and one closed



### LP-3 Low Pressure Indicator

- Normally closed - 0 psi
- Opens at 60 psi

Sloan	
No.	Description
401214	1/4" Single Terminal
401215	1/4" Double Terminal



### SL-4 Stop Light Switch

Sloan No.	Normally Open	Closes	P.T. Supply
401230	0 psi	5 psi	1/4"



## Switches & Toggles

### On - Off

Sloan			
No.	Volt	Amp	Terminals & Type
422642	12	50	2 Screw



### On - Off - On

Sloan			
No.	Volt	Amp	Terminals & Type
422643	12	50	3 Screw



### On - On

- 1.5" Handle

Sloan			
No.	Volt	Amp	Terminals & Type
422645	12	50	3 Screw
422646	12	50	Quick Connect



### On - Off - Momentary On

Sloan			
No.	Volt	Amp	Terminals & Type
422647	12	25LL/35IL	Quick Connect



### Push - Pull

Sloan			
No.	Volt	Amp	Terminals & Type
422651	6-28	75	2 Screw

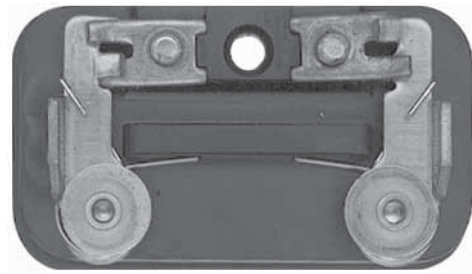


## Switches & Toggles

### Two Speed Axle Shift Limit Switch

- Use with 422653

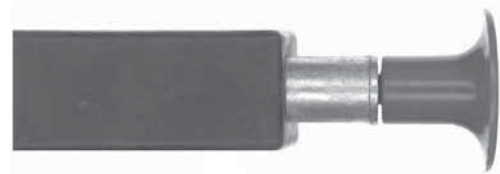
Sloan	
No.	Description
422652	Controls 2 speed electronic axle



### Two Speed Axle Switch

- Red knob

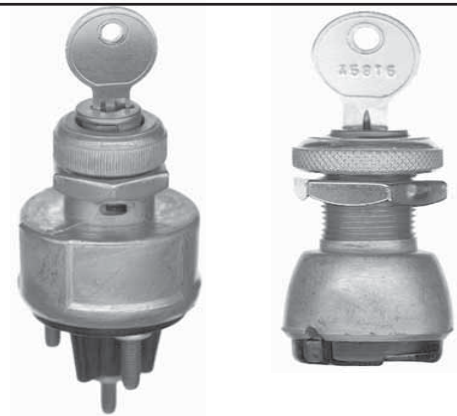
Sloan	
No.	Description
422653	3 Female terminal connections



### Universal Ignition Switch

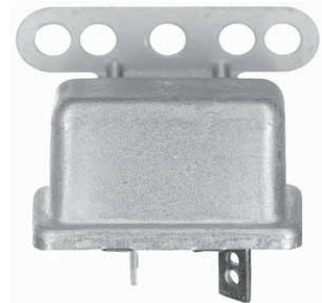
- Includes 2 keys

Sloan	
No.	Description
422648	4 position electrical switch (ACC, OFF, ON/ACC, START)
422649	2 position electrical switch (OFF, ON)



### Low Air Pressure

Sloan	
No.	Description
422654	12 volt - 2 screw terminals



### Dimmer Switch

- Universal - floorboard mount

Sloan	
No.	Description
422650	2 - ON positions

