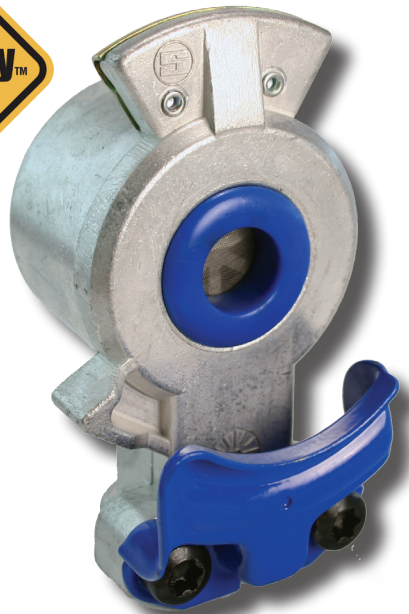


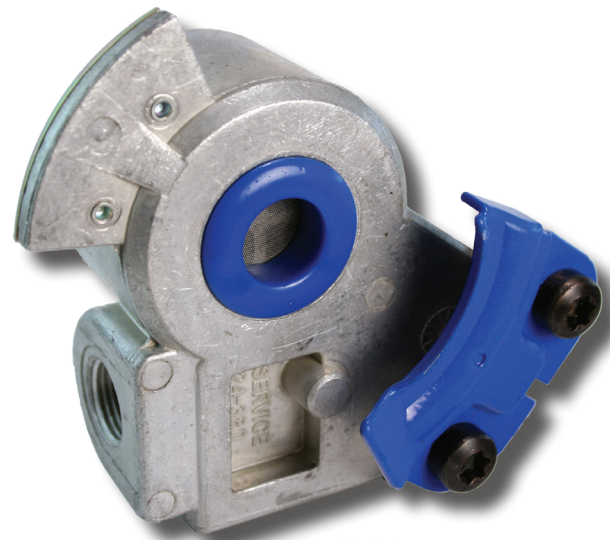
Rapid-Release™ Service Gladhand



Fleet Sheet



Standard Mount



37.5° Angle Mount

Product Review

The Rapid-Release™ valve and straight mount gladhand have combined. It is designed to be used with ABS and non-ABS brake systems. It has a 1/2" female pipe thread with or without a filter screen and should be used on trailers only.

The Rapid-Release™ valve and angle mount (37.5°) gladhand have combined. It is designed to be used with ABS and non-ABS brake systems. It has a 3/8" female pipe thread bottom/back port with or without a filter screen and should be used on trailers only.

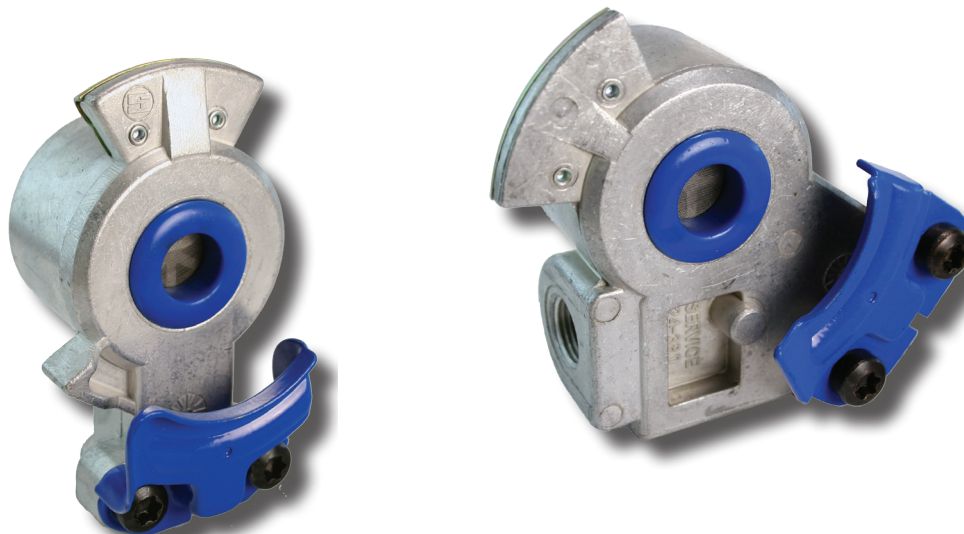


**Sloan
Delivers**

www.sloantrans.com • Phone: 800-336-7778 • Fax: 877-286-6515



Reduces wear on drums
resulting in maintenance savings



Rapid-Release™ Service Gladhand

- Releases trailer brakes up to 50% faster than standard methods.
- Available in both standard and 37.5° mount.
- Prevents in-city trailer bounce.
- Meets SAE J318 specifications.
- Includes polyurethane seal.
- Regular equipment on the majority of OEM trailers.

Sloan No.	Configuration	Seal Type	Remarks
441175	standard	poly	w/ filter
441176	standard	poly	
441177	angle mount	poly	w/ filter
441178	angle mount	poly	

Rapid-Release™ Service Kit

Sloan No.	Description
451715	Rapid Release Gasket Service Kit -includes gasket, snap ring, and diaphragm